



# Tumwater Fire Department Operations Bulletin COVID-19 Self-Screening Guidelines

---

## ***Goal:***

The goal of self-screening is to protect our Members health and safety by identifying COVID-19 symptoms early and preventing exposures.

## ***Background:***

Signs and Symptoms of the COVID 19 include fever, cough, and shortness of breath. It is prudent for our Members' to monitor their health, before beginning work and at the mid-point of their 24-hour shift.

## ***Self-Screening Procedure:***

1. Effective immediately, when you report to work, you will enter the designated entrance at your assigned work location.
  - Station T1
    - i. South door from parking lot to Admin hallway
  - Station T2
    - i. West side door into apparatus bay
  - Station 1-1
    - i. SE Bay entry door.
2. Members should conduct self-screening upon entry of the building, prior to entering populated areas
3. Self-screening criteria
  - Fever (greater than 100.5 F) with or without chills
    - i. If positive with temporal thermometer, confirm reading with oral thermometer
  - Uncontrolled nasal secretions/excretions not attributed to season allergies
  - Sore throat not attributed to season allergies
  - Productive/uncontrolled cough
  - Diarrhea associated with an acute illness
  - Influenza or COVID-19 like illness, fever and/or shortness of breath
4. For shift members, a second screening will be conducted at mid-point in their shift
5. Upon completing self-screening, Members will report their fit for duty status to their immediate supervisor
6. Supervisors will record their assigned members' status in CrewSense.
  - M14 and ET2 officers contact Shift Supervisor and advise of crew status
  - Shift Supervisor shall contact MSO Crimmins with any positive screening



## Tumwater Fire Department Operations Bulletin COVID-19 Self-Screening Guidelines

### ***Procedure for a Positive Self-Screening:***

1. Member self-screen positive for COVID-19 related symptoms will initially be treated as a COVID-19 work related illness, until proven otherwise.
2. Member will don a surgical mask, notify their supervisor and obtain a COVID-19 Exposure Packet. This COVID-19 Exposure Packet will have the following documents:
  - Washington State Department of Health, What to do if you have confirmed or suspected coronavirus disease 2019 (COVID-19), March 17, 2020.
  - TFD Healthcare Provider Letter
  - 2020 COVID-19 Exposure Flowchart
  - Labor and Industries Workers Compensation (online filing claim filing) <https://www.lni.wa.gov/claims/for-medical-providers/filing-claims/filefast-report-of-accident>
3. Member should seek medical attention to rule out COVID-19 illness
  - Contact MSO Crimmins or Assistant Chief Hurley if you do not have a primary care provider or want other options
  - Captain Crimmins (360) 970-6334
  - AC Hurley (360) 239-3585 or (360) 791-3760

### ***References:***

IAFF COVID-19 Best Practices, Self-Screening Guidelines retrieved from <https://www.iaff.org/wp-content/uploads/Coronavirus-Self-Screening-Guidelines-2020-003-1.pdf>

Washington State Department of Health, What to do if you have confirmed or suspected coronavirus disease 2019 (COVID-19), March 17, 2020. Retrieved from: <https://www.doh.wa.gov/Portals/1/Documents/1600/coronavirus/COVIDcasepositive.pdf>

Workers Compensation Coverage and Coronaviruse (COVID-19) Common Questions, March 20, 2020. Retrieved from: <https://www.lni.wa.gov/agency/outreach/workers-compensation-coverage-and-coronavirus-covid-19-common-questions>

### ***Appendices:***

1. 2020 COVID-19 Self-Screening Guidelines
2. 2020 Suspected COVID-19 Care Flow Chart



# COVID-19 Best Practices Self-Screening Guidelines

1. Members should conduct self-screening upon entry of the building, prior to entering populated areas
2. Self-screening criteria
  - a. Fever (greater than 100.5 F) with or without chills \*
    - i. If positive with temporal thermometer, confirm reading with oral thermometer
  - b. Uncontrolled nasal secretions/excretions not attributed to season allergies
  - c. Sore throat not attributed to season allergies
  - d. Productive/uncontrolled cough
  - e. Diarrhea associated with an acute illness
  - f. Influenza or COVID-19 like illness, fever and/or shortness of breath
3. For shift members, a second screening will be conducted at mid-point in their shift
4. Upon completing self-screening, Members will report their fit for duty status to their immediate supervisor

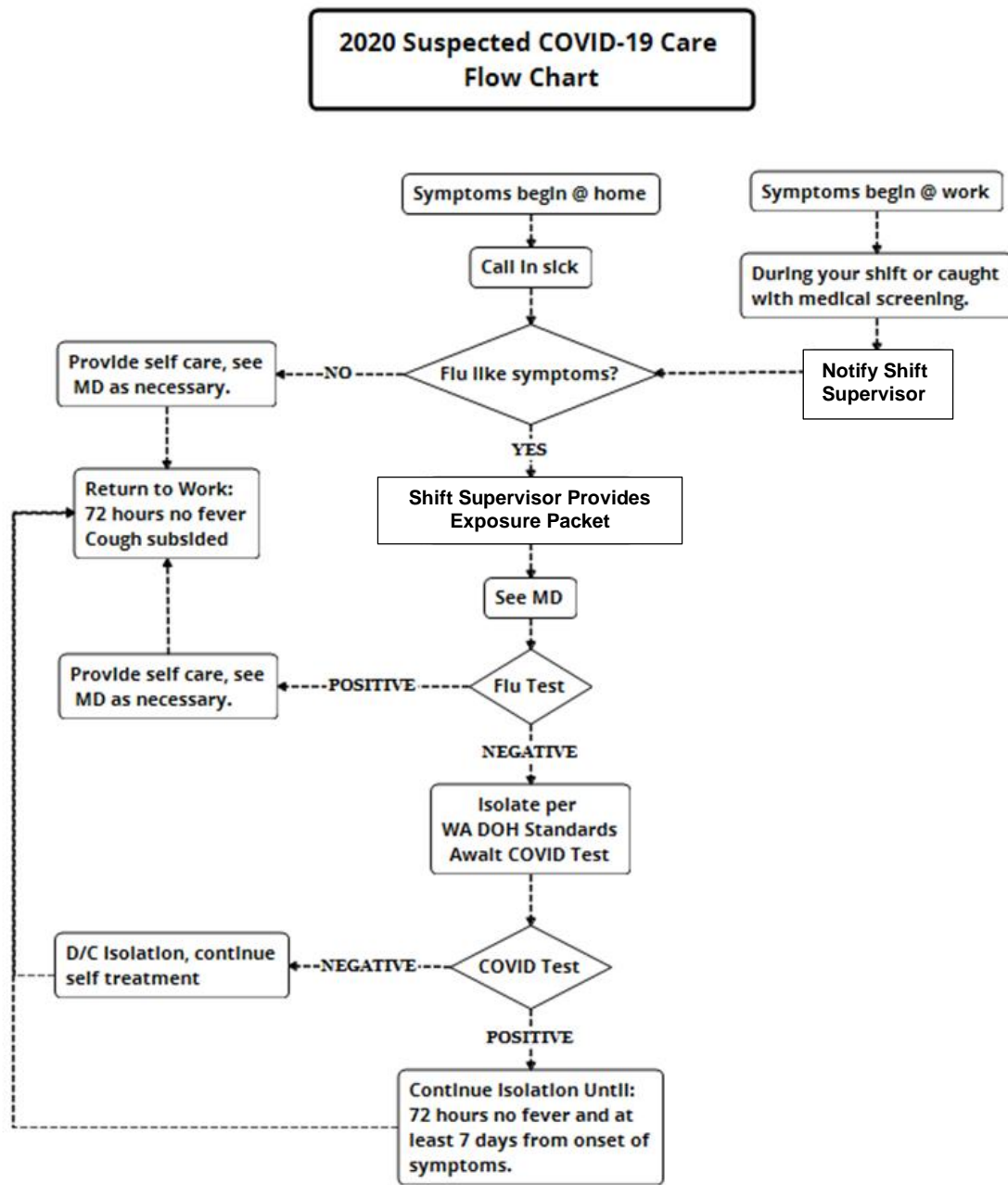
\*We recognize our department's thermometers are not always the most reliable. Please pair the reading with your best clinical judgement. We are working to find a better thermometer.

## Reference:

IAFF COVID-19 Best Practices, Self-Screening Guidelines retrieved from <https://www.iaff.org/wp-content/uploads/Coronavirus-Self-Screening-Guidelines-2020-003-1.pdf>



# Tumwater Fire Department Operations Bulletin COVID-19 Self-Screening Guidelines



## Reference:

Washington State Department of Health, What to do if you have confirmed or suspected coronavirus disease 2019 (COVID-19), March 17, 2020. Retrieved from: <https://www.doh.wa.gov/Portals/1/Documents/1600/coronavirus/COVIDcasepositive.pdf>